



Cable ID: CMPLE CAT6 CU

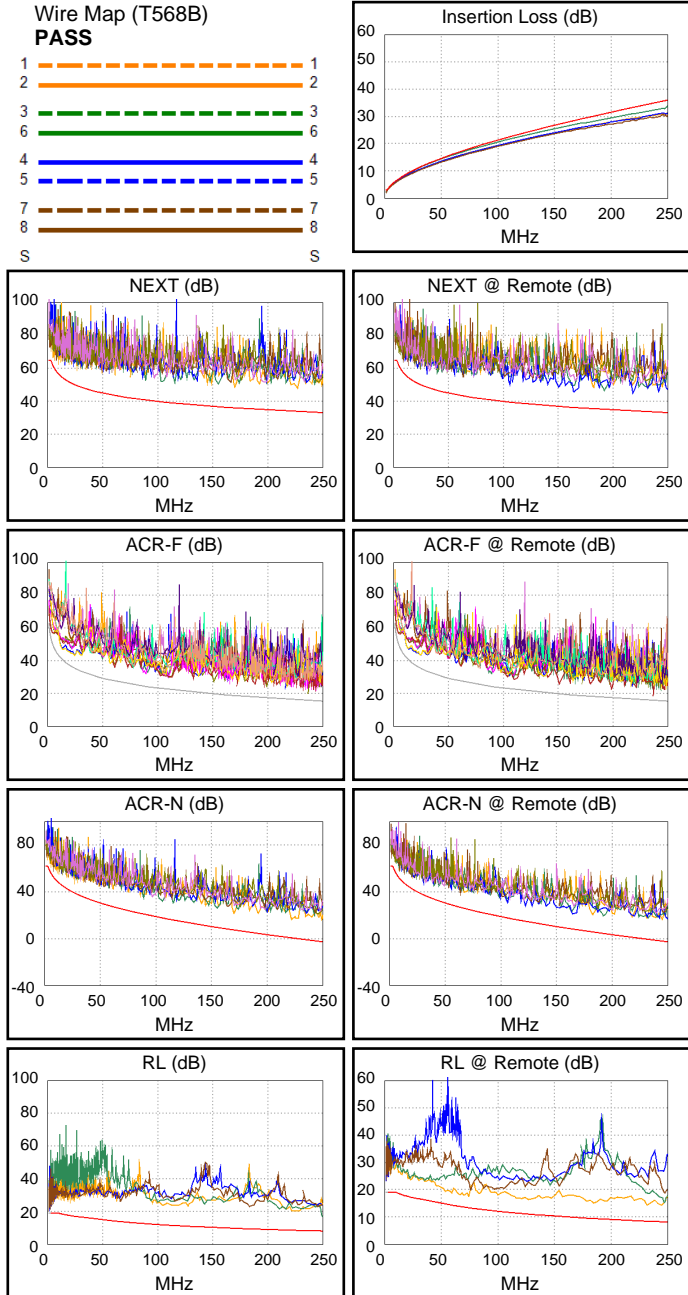
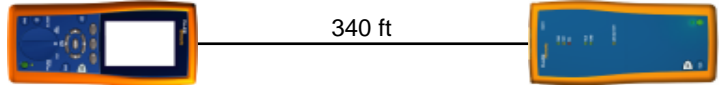
Test Limit: TIA Cat 6 Channel
Limits Version: 1.9500
Date / Time: 07/12/2023 02:23:57 PM
Operator: ZMY
Headroom 8.0 dB (NEXT 1,2-3,6)
Cable Type: Cat 6 U/UTP
NVP: 69.0%

Main: DTX CableAnalyzer
S/N: 9557049
Software Version: 2.7800
Calibration Date: 07/21/2008
Adapter: DTX-CHA002
S/N: MC6TJLR

Test Summary: PASS

Remote: DTX CableAnalyzer
S/N: 9557050
Software Version: 2.7800
Calibration Date: 07/21/2008
Adapter: DTX-CHA002
S/N: MCFUSHM

Length (ft), Limit 328	[Pair 7,8]	340
Prop. Delay (ns), Limit 555	[Pair 3,6]	523
Delay Skew (ns), Limit 50	[Pair 3,6]	22
Resistance (ohms)	[Pair 3,6]	16.4
Insertion Loss Margin (dB)	[Pair 3,6]	2.1
Frequency (MHz)	[Pair 3,6]	250.0
Limit (dB)	[Pair 3,6]	35.9



Worst Case Margin Worst Case Value

PASS	MAIN	SR	MAIN	SR
Worst Pair	1,2-3,6	1,2-4,5	1,2-3,6	1,2-7,8
NEXT (dB)	8.0	8.0	13.6	10.9
Freq. (MHz)	4.9	8.6	222.5	218.0
Limit (dB)	61.7	57.6	34.0	34.1
Worst Pair	3,6	4,5	1,2	1,2
PS NEXT (dB)	7.6	8.0	14.8	12.0
Freq. (MHz)	3.0	8.8	223.0	218.0
Limit (dB)	62.0	55.0	31.0	31.2

PASS	MAIN	SR	MAIN	SR
Worst Pair	4,5-3,6	4,5-3,6	4,5-3,6	4,5-3,6
ACR-F (dB)	5.8	5.6	7.0	5.8
Freq. (MHz)	3.5	111.0	244.0	237.0
Limit (dB)	52.4	22.4	15.5	15.8
Worst Pair	4,5	4,5	3,6	4,5
PS ACR-F (dB)	7.4	7.4	9.5	7.6
Freq. (MHz)	109.5	109.5	249.0	243.5
Limit (dB)	19.5	19.5	12.3	12.5

N/A	MAIN	SR	MAIN	SR
Worst Pair	1,2-3,6	1,2-4,5	1,2-3,6	1,2-7,8
ACR-N (dB)	8.1	8.4	15.8	17.7
Freq. (MHz)	6.0	8.8	222.5	241.5
Limit (dB)	55.3	51.6	0.4	-1.8
Worst Pair	3,6	4,5	3,6	1,2
PS ACR-N (dB)	7.7	8.5	20.4	18.5
Freq. (MHz)	3.0	8.8	249.0	241.5
Limit (dB)	58.5	49.0	-5.7	-4.8

PASS	MAIN	SR	MAIN	SR
Worst Pair	7,8	1,2	3,6	1,2
RL (dB)	6.5	4.0	9.1	6.1
Freq. (MHz)	3.4	70.3	249.5	243.5
Limit (dB)	19.0	13.5	8.0	8.1

Compliant Network Standards:
 10BASE-T 100BASE-TX 100BASE-T4
 1000BASE-T 2.5GBASE-T 5GBASE-T
 ATM-25 ATM-51 ATM-155
 100VG-AnyLan TR-4 TR-16 Active
 TR-16 Passive