



Cable ID: CMPLE CAT5E CU

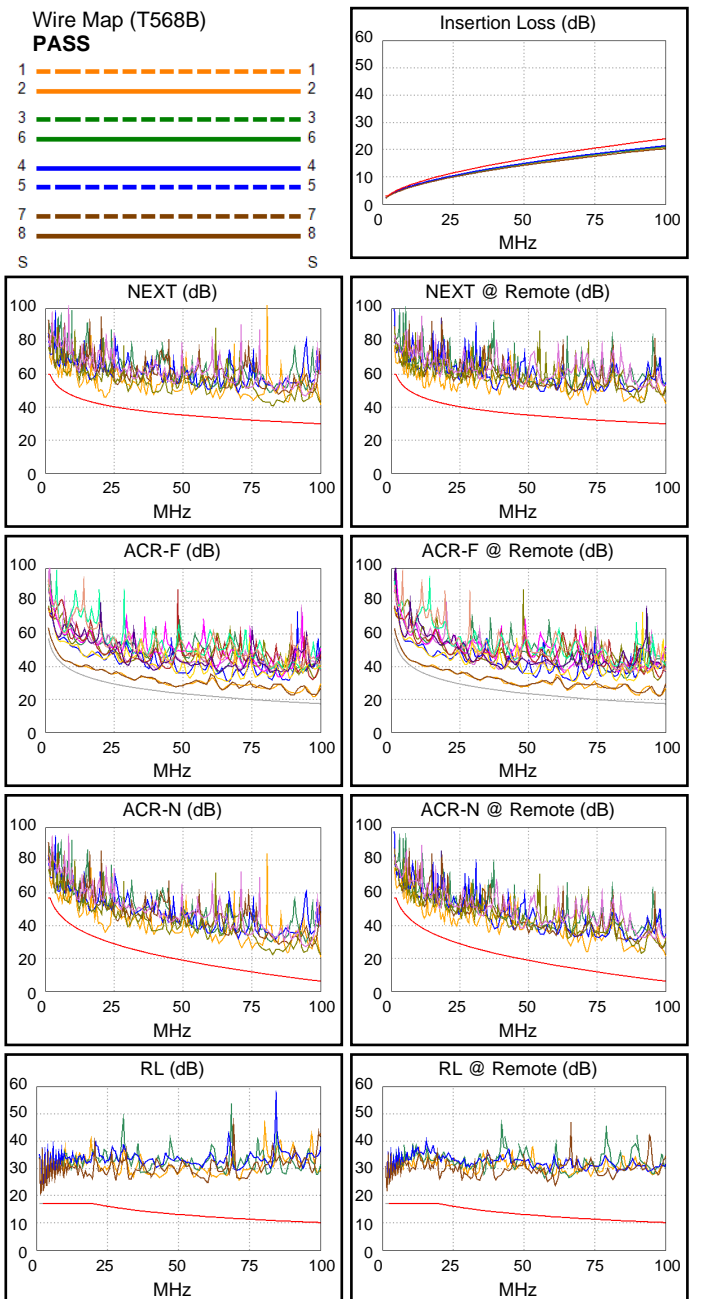
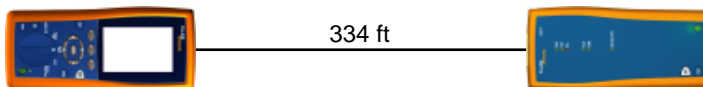
Test Limit: TIA Cat 5e Channel
Limits Version: 1.9500
Date / Time: 07/12/2023 02:11:31 PM
Operator: ZMY
Headroom 4.2 dB (NEXT 1,2-3,6)
Cable Type: Cat 5e U/UTP
NVP: 69.0%

Main: DTX CableAnalyzer
S/N: 9557049
Software Version: 2.7800
Calibration Date: 07/21/2008
Adapter: DTX-CHA002
S/N: MC6TJLR

Test Summary: PASS

Remote: DTX CableAnalyzer
S/N: 9557050
Software Version: 2.7800
Calibration Date: 07/21/2008
Adapter: DTX-CHA002
S/N: MCFUSHM

Length (ft), Limit 328	[Pair 7,8]	334
Prop. Delay (ns), Limit 555	[Pair 4,5]	507
Delay Skew (ns), Limit 50	[Pair 4,5]	15
Resistance (ohms)	[Pair 4,5]	20.9
Insertion Loss Margin (dB)	[Pair 4,5]	2.6
Frequency (MHz)	[Pair 4,5]	100.0
Limit (dB)	[Pair 4,5]	24.0



Worst Case Margin Worst Case Value

PASS	MAIN	SR	MAIN	SR
Worst Pair	1,2-3,6	1,2-3,6	3,6-7,8	1,2-3,6
NEXT (dB)	4.2	5.8	9.2	8.8
Freq. (MHz)	21.5	11.9	82.3	71.3
Limit (dB)	41.4	45.8	31.5	32.6
Worst Pair	1,2	3,6	3,6	3,6
PS NEXT (dB)	7.0	7.9	12.1	12.9
Freq. (MHz)	21.6	11.9	100.0	91.8
Limit (dB)	38.4	42.8	27.1	27.7

PASS	MAIN	SR	MAIN	SR
Worst Pair	3,6-1,2	1,2-3,6	1,2-3,6	3,6-1,2
ACR-F (dB)	3.0	3.0	4.0	4.4
Freq. (MHz)	6.3	6.1	97.5	97.3
Limit (dB)	41.5	41.7	17.6	17.6
Worst Pair	1,2	1,2	3,6	1,2
PS ACR-F (dB)	5.6	5.8	6.7	6.9
Freq. (MHz)	6.3	6.1	97.3	97.5
Limit (dB)	38.5	38.7	14.6	14.6

N/A	MAIN	SR	MAIN	SR
Worst Pair	1,2-3,6	1,2-3,6	1,2-3,6	1,2-3,6
ACR-N (dB)	5.2	6.6	14.6	15.2
Freq. (MHz)	21.5	11.9	100.0	100.0
Limit (dB)	30.9	38.0	6.1	6.1
Worst Pair	3,6	3,6	3,6	3,6
PS ACR-N (dB)	8.1	8.6	15.2	15.7
Freq. (MHz)	21.5	12.1	100.0	91.8
Limit (dB)	27.9	34.8	3.1	4.8

PASS	MAIN	SR	MAIN	SR
Worst Pair	7,8	7,8	7,8	7,8
RL (dB)	5.3	7.6	5.3	11.5
Freq. (MHz)	2.5	2.5	2.5	61.0
Limit (dB)	17.0	17.0	17.0	12.2

Compliant Network Standards:
 10BASE-T 100BASE-TX 100BASE-T4
 1000BASE-T 2.5GBASE-T ATM-25
 ATM-51 ATM-155 100VG-AnyLan
 TR-4 TR-16 Active TR-16 Passive